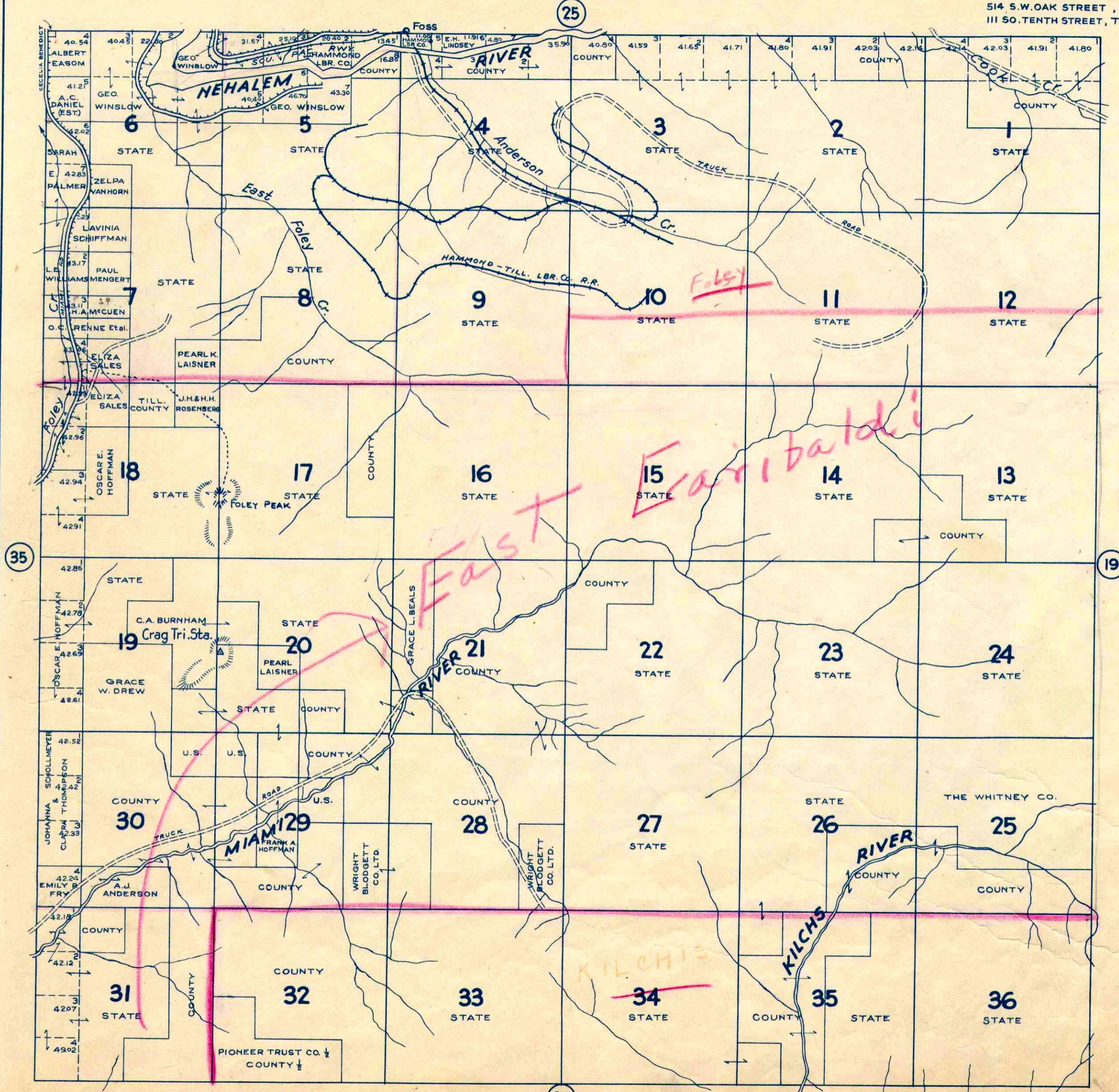


# TOWNSHIP 2 N., RANGE 9 W.W.M. TILLAMOOK COUNTY ORE.

SCALE 2 IN. = 1 MILE.

CHAS. F. METSKER CIVIL ENGINEER  
514 S.W. OAK STREET, PORTLAND, ORE.  
111 50. TENTH STREET, TACOMA, WASH.



— LEGEND —

- PAVED ROADS
- IMPROVED DIRT ROADS
- OTHER ROADS
- TRAILS
- RAILROADS
- ELE. RWYS.
- SCHOOLS